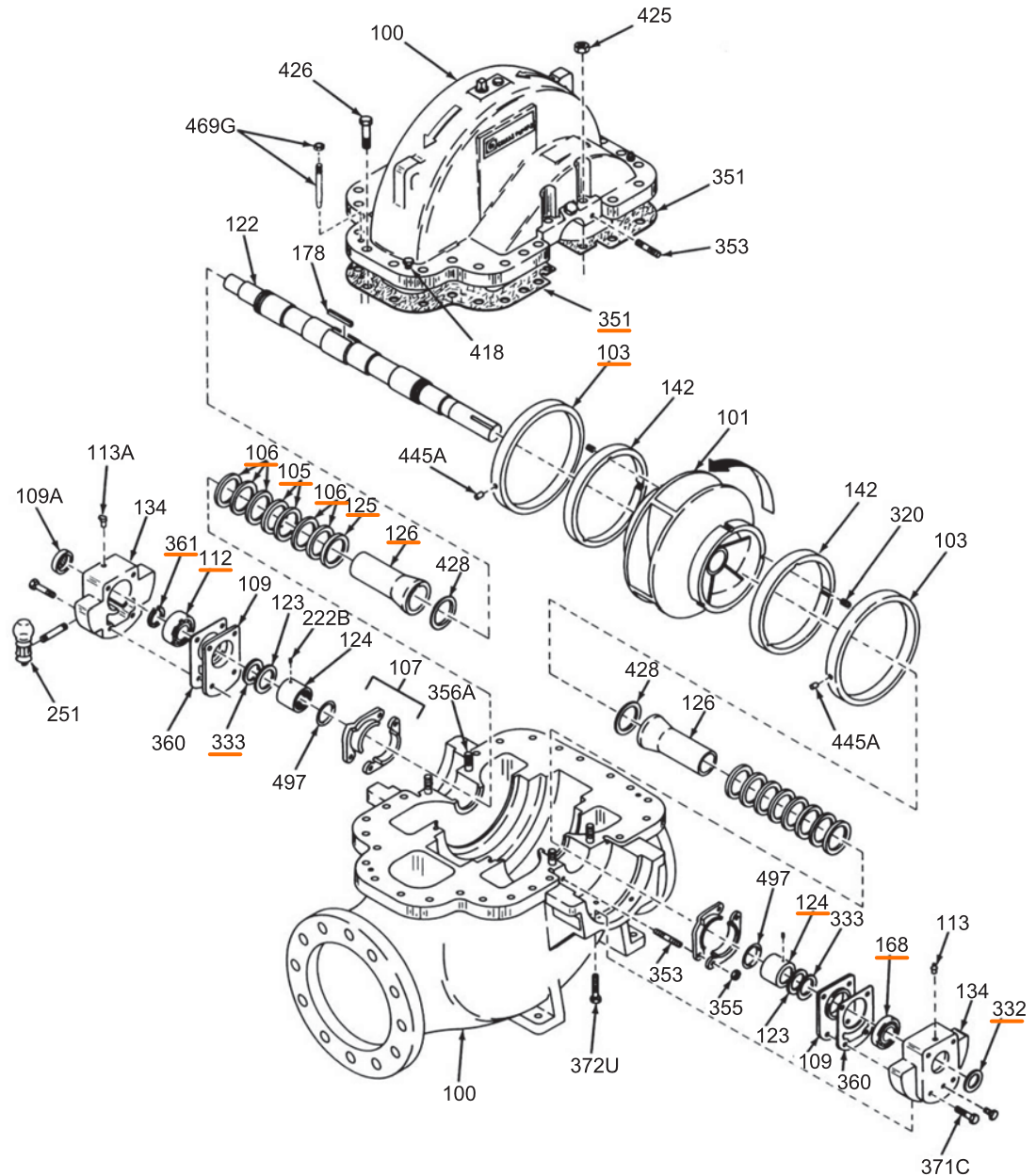


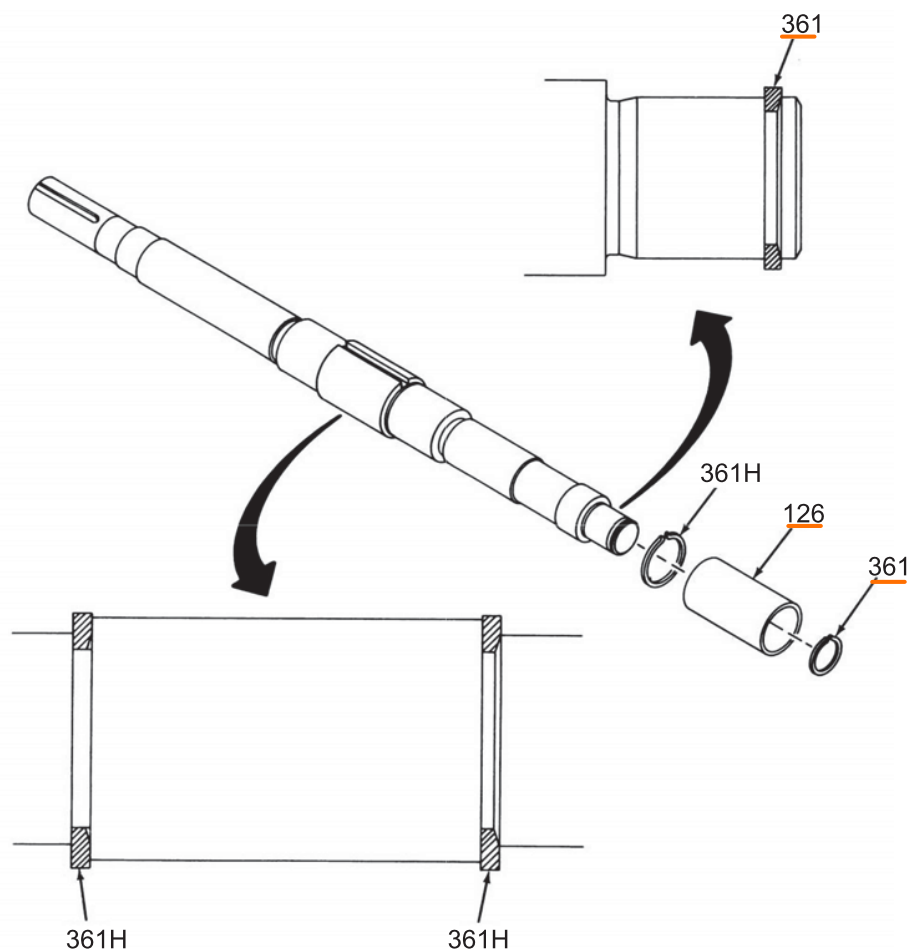
Parts Listings and Cross-Sectionals

Drawings

Exploded view



Retaining ring configuration



Parts list

Item	Quantity per pump	Part name	Bronze-fitted	All iron	Iron/316 rotating element	All 316SS
100	1 upper 1 lower	Casing	1003		-	A743 CF-8M
101	1	Impeller	1179	1000	316	
102	2	Seal tubing (optional)	Brass	Steel		316
103	2	Casing wear ring	1618	1000	1071	
105	2	Lantern ring	Glass-filled Teflon			
106	1 set	Stuffing box packing	Square non-asbestos (die-formed S and M groups)			
107	2	Stuffing box gland	AISI 316			
109	2	Bearing end cover	1000			
109A	1	Thrust bearing end cover	Steel			
112	1	Thrust ball bearing	Steel			
113	2	Grease fitting	Steel			
113A	2	Breather (oil lubrication only)	Steel			
122	1	Shaft	AISI 4140			
123	1	Deflector (optional)	Laminated plastic			
124	1	Sleeve nut (M, L, and XL only)	1618	1000	1071	
125	2	Stuffing box bushing	316			
126	2	Shaft sleeve (optional on S group)	1618	1000	316	
134	2	Bearing housing	1000			

Item	Quantity per pump	Part name	Bronze-fitted	All iron	Iron/316 rotating element	All 316SS
142	2	Impeller wear ring	1618	1000	316	
168	1	Coupling ball bearing	Steel			
178	1	Impeller key	AISI 1018			
222B	4	Sleeve nut setscrews	Steel			
250	2	Mechancial seal gland (Flush STD)	1179	1003	1002	316
	2	Mechanical seal gland (FL-VT-DR, optional)	Steel			
251	2	Sight oiler (optional oil lubrication)	White metal and glass			
317	2	Thrust mechanical seal (optional)	Steel			
317A	1	Radial mechanical seal (optional)	Steel			
320	6	Retaining setscrew (for optional impeller wear ring)	303 SS			
332	1	Oil seal outboard grease	Buna rubber			
332A	1	Labyrinth seal outboard (optional)	Steel			
333	1	Oil seal - inboard, grease	Buna rubber			
333A	1	Labyrinth seal inboard (optional)	Steel			
351	1	Parting casing gasket	1/32 in. non-asbestos			
353	4	Gland studs	316			
353B	2	Hex capscrew with cast iron mechanical seal gland	Steel			
	4	Hex capscrew with steel mechanical seal gland	Steel			
355	4	Gland stud hex nut	304			
356A	4	Casing parting stud	Steel			
360	2	Gasket, end cover to bearing housing	Kraft paper			
360Q	8	Gasket, gland to case	Non-asbestos			
361	1	Thrust bearing retaining ring	Steel			
361H	2	Impeller retaining ring (S group only)	Steel		Stainless steel	
371C	8	Hex capscrew	Steel			
372U	4	Hex capscrew	Steel			
418	2	Hex capscrew (casing jacking)	Steel			
425	4	Parting hex nuts	Steel			
426	Varies	Hex capscrew (parting)	Steel			
428	2	Gasket, sleeve to impeller (M, L, and XL only)	1/32 in. non-asbestos			
445A	2	Anti-rotation pin, casing wear ring	AISI 420		AISI 316	
469G	2	Tapered pin with hex nut	Steel			
494	2	Cooling assembly (optional)	Fitting copper tube			
497	2	Sleeve nut O-ring (M, L, and XL only)	Buna rubber			

Materials of construction

Code	Specification
1000	Cast iron - ASTM A48 Class 25B
1003	Cast iron - ASTM A48 Class 30B
1179	Bronze - ASTM B584-UNS C87600
304	Wrought stainless - ASTM A276, Type 304
AISI 1018	ASTM A108, Grade 1018 -B1112
AISI 420	ASTM A276, Type 420
AISI 4140	ASTM A322, Grade 4140
1618	Bronze -ASTM B584 Alloy C80500
1071	Nitronic 60 - ASTM A743 Grade CF10SMnN