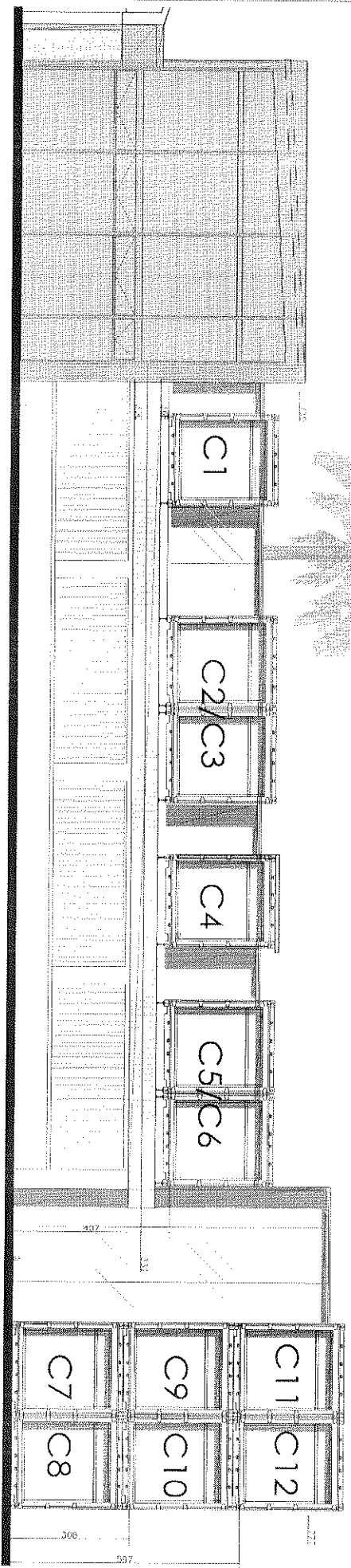


SECAN TNU / RNU - PLANTA ALTA - CONTENEDORES FACHADA



SECAN TNU / RNU - ASESORIA EDUCATIVA  
HOLIVAR ANTIGUA 2859 MAD / UV TEL: 19226 212

10/2016

SECTOR RADIO FACHADA PRINCIPAL OESTE

PROYECTO: RADIO FACHADA PRINCIPAL OESTE

ARQ: MARTIN MORALES FERRER

ESCALA

1:200

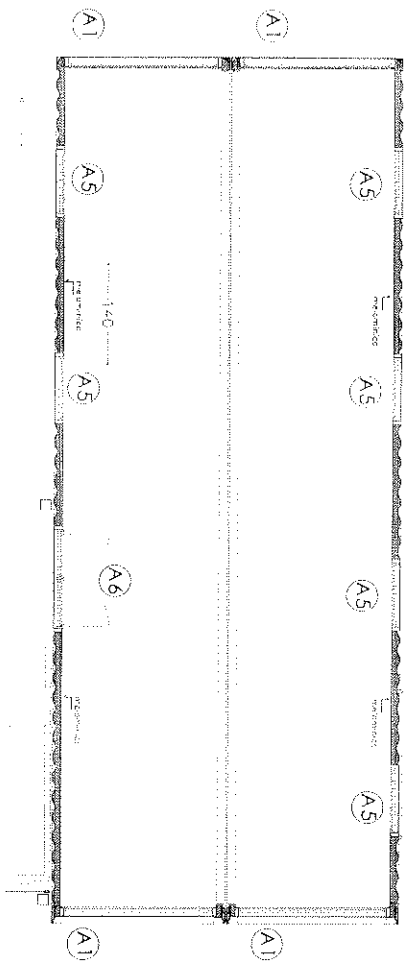
FECHA: 17/07/16

PROYECTO: 0001

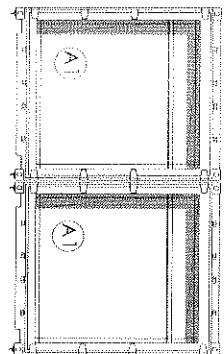
HOJA

A 04

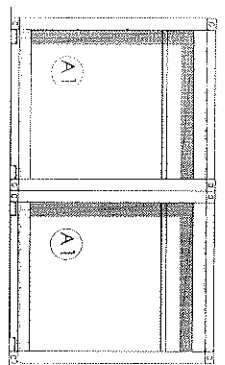
CONTAINERS 7 A 12 PLANTA 1/50



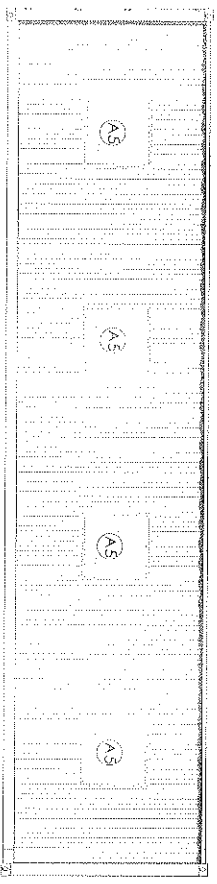
FACHADAS 1/50  
FRENTE



FONDO

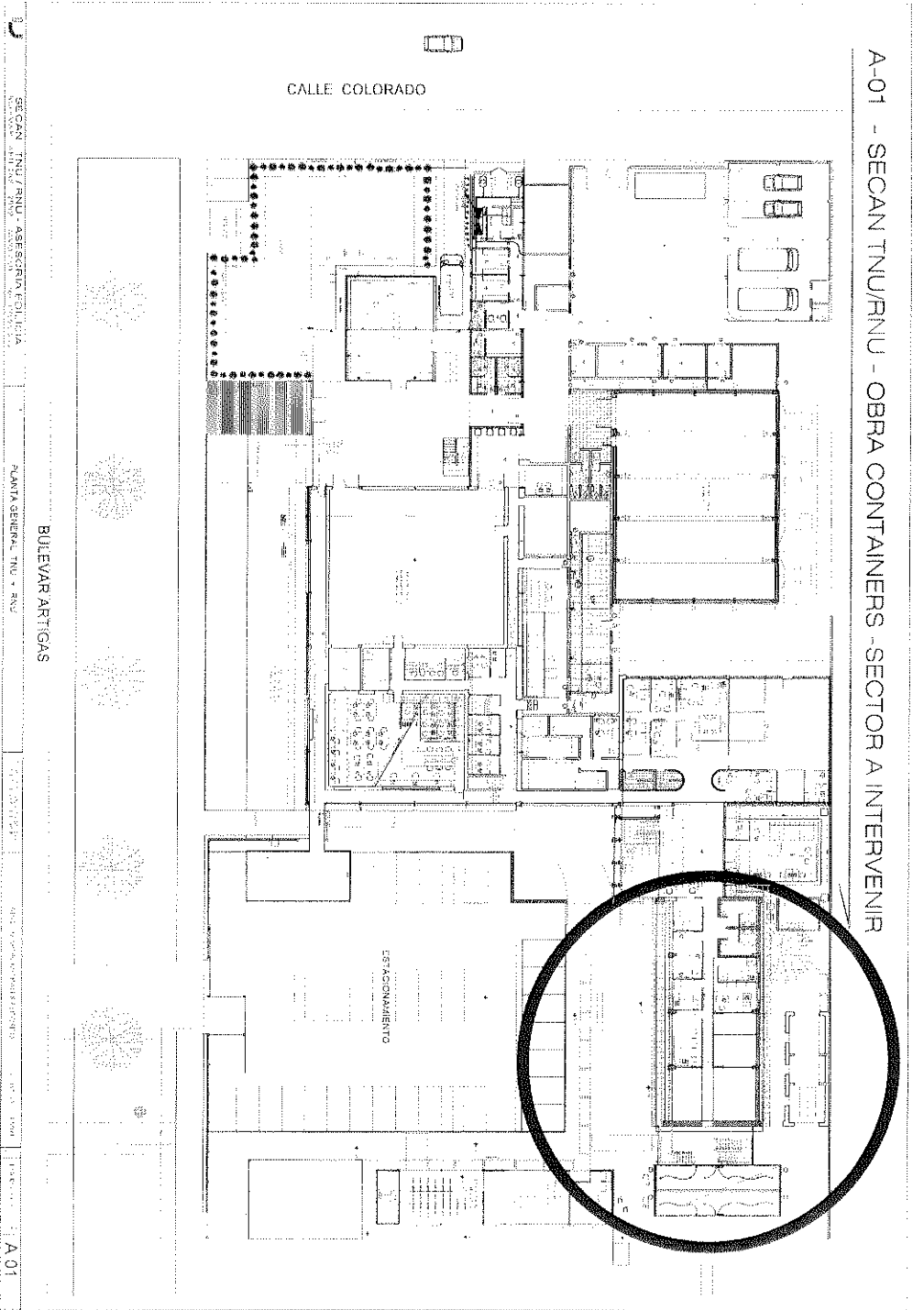


FACHADA SUR 1/50



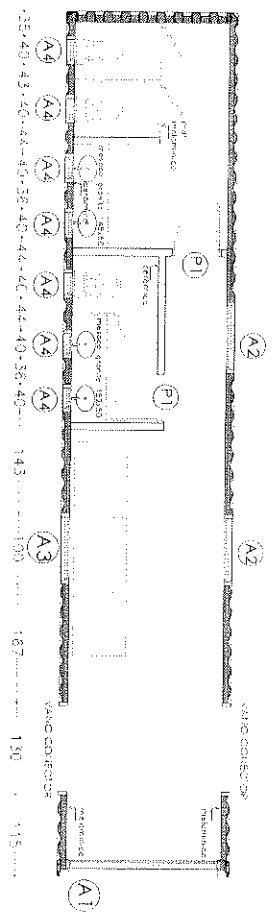
SECCION TRANSVERSAL ASEGURIA EDIFICIA  
 CONSTRUCCION DE CONTAINERS  
 CONTAINERS 7 A 12  
 W.S. DE VENTILACION  
 DEBUTANT

A-01 - SECAN TNU/RNU - OBRA CONTAINERS - SECTOR A INTERVENIR

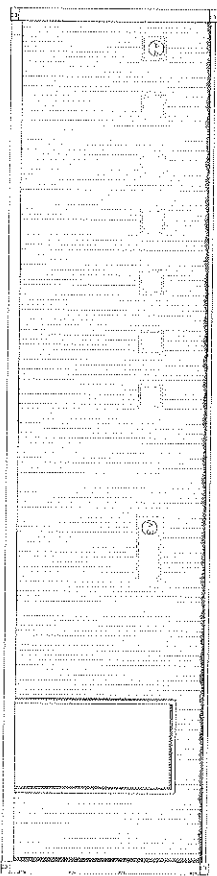


SECAN TNU/RNU - ASSEQUIA FOLICIA PLANTA GENERAL TNU - RNU  
 ESTACIONAMIENTO  
 BOLEVAR ARTIGAS  
 CALLE COLORADO  
 A-01

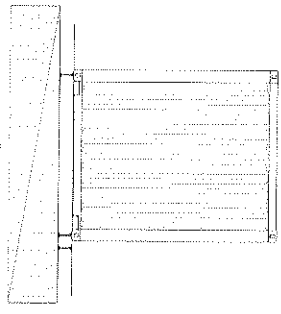
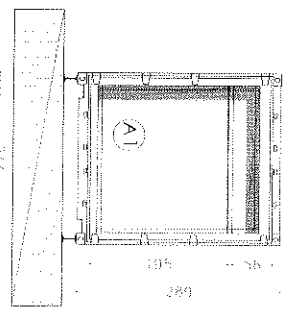
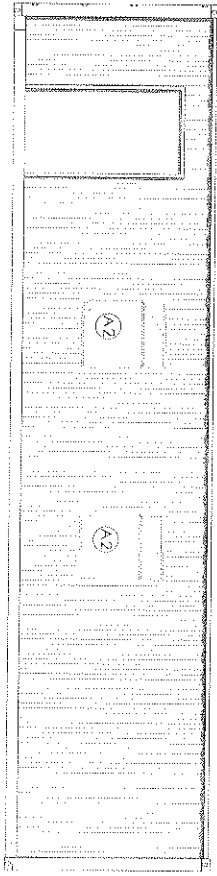
C1 - container 1 PLANTA 1/50



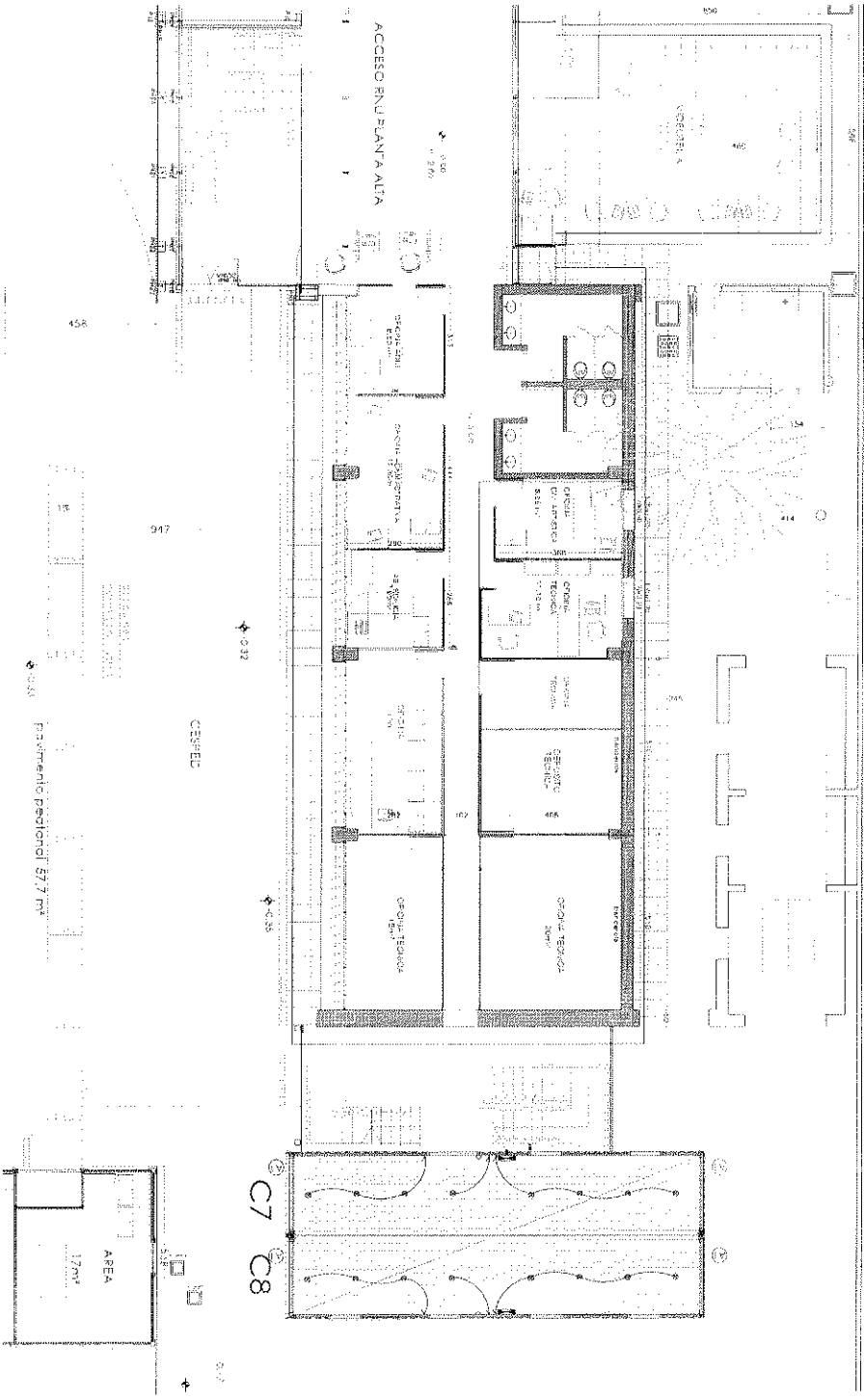
FACHADA NORTE 1/50



FACHADA SUR 1/50





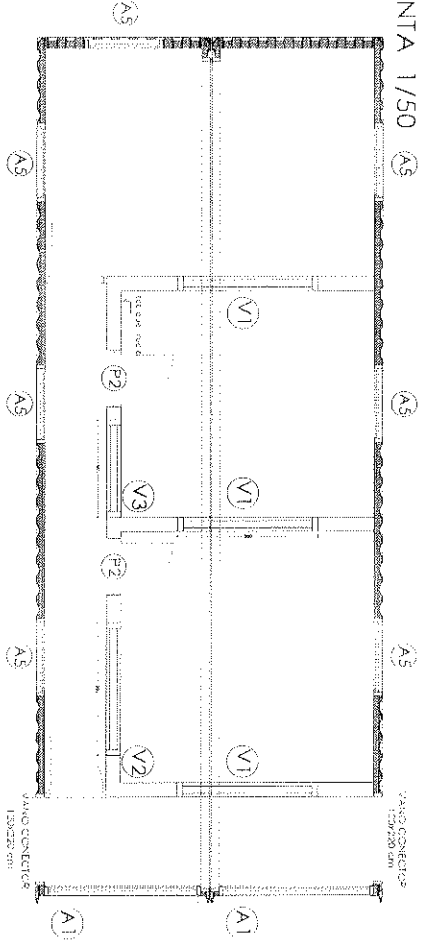


SECAN TNU / RNU / ASESORIA EDIFICIA

SECTOR PASO PLANTA BAJA

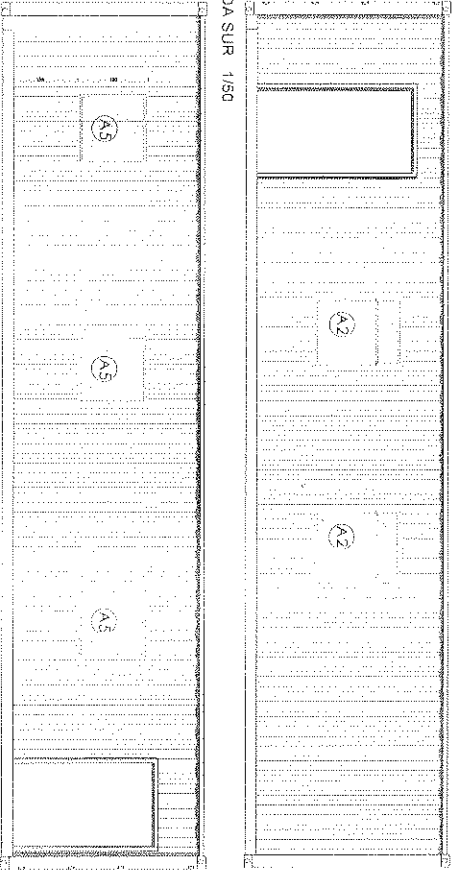
A-02

PLANTA 1/50

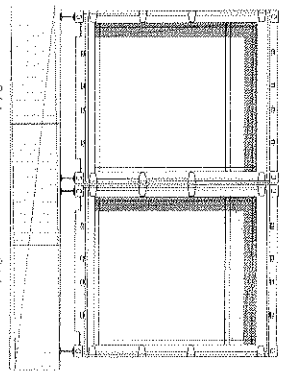


FACHADA NORTE 1/50

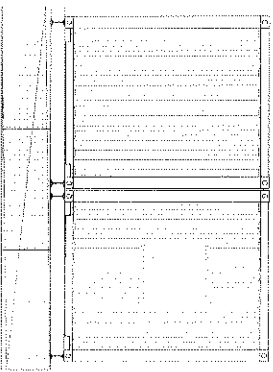
FACHADA SUR 1/50



FACHADAS 1/50

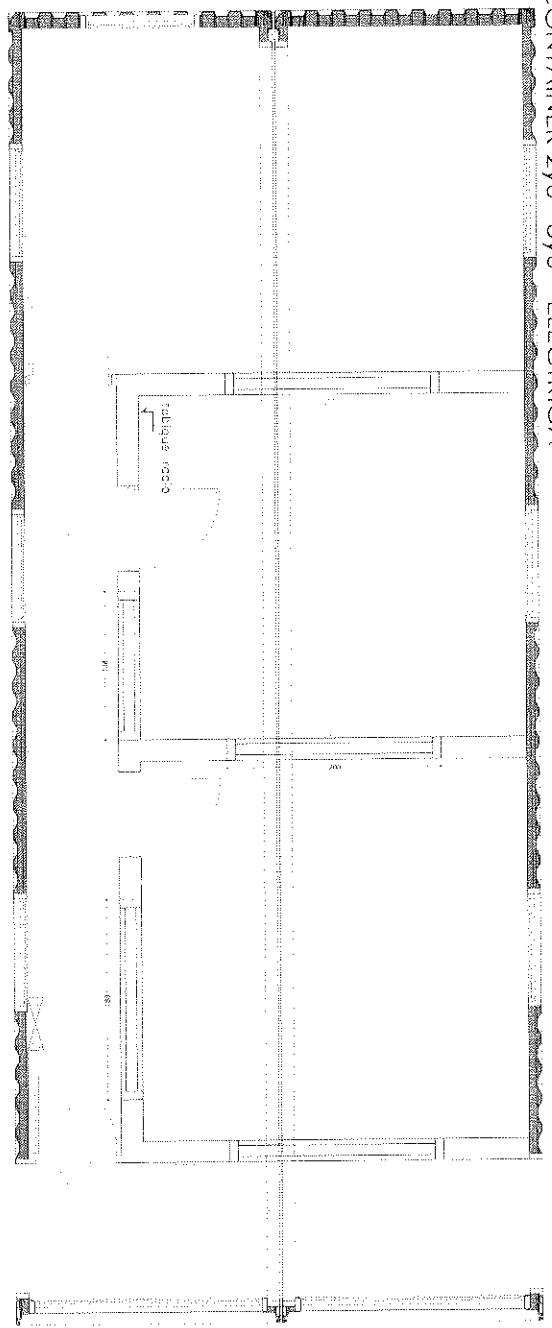


C2/3 containers 2y3  
C3/6 containers 5y6  
FRENTE BULEVAR

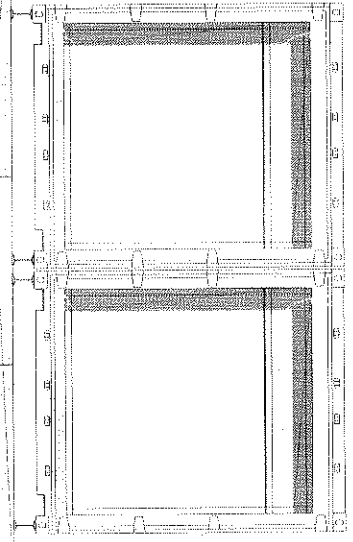


C2/3 containers 2y3  
C5/6 containers 5y6  
FONDO

PLANTA 1/33



FACHADA 1/33



SEGUN PLANO ABISORIA ESTRUCTA

ACONDICIONAMIENTO CONTAINERS

CONTAINER SYSTEM

PROYECTO DE OBRAS

1:50

1:50

1:50

1:50

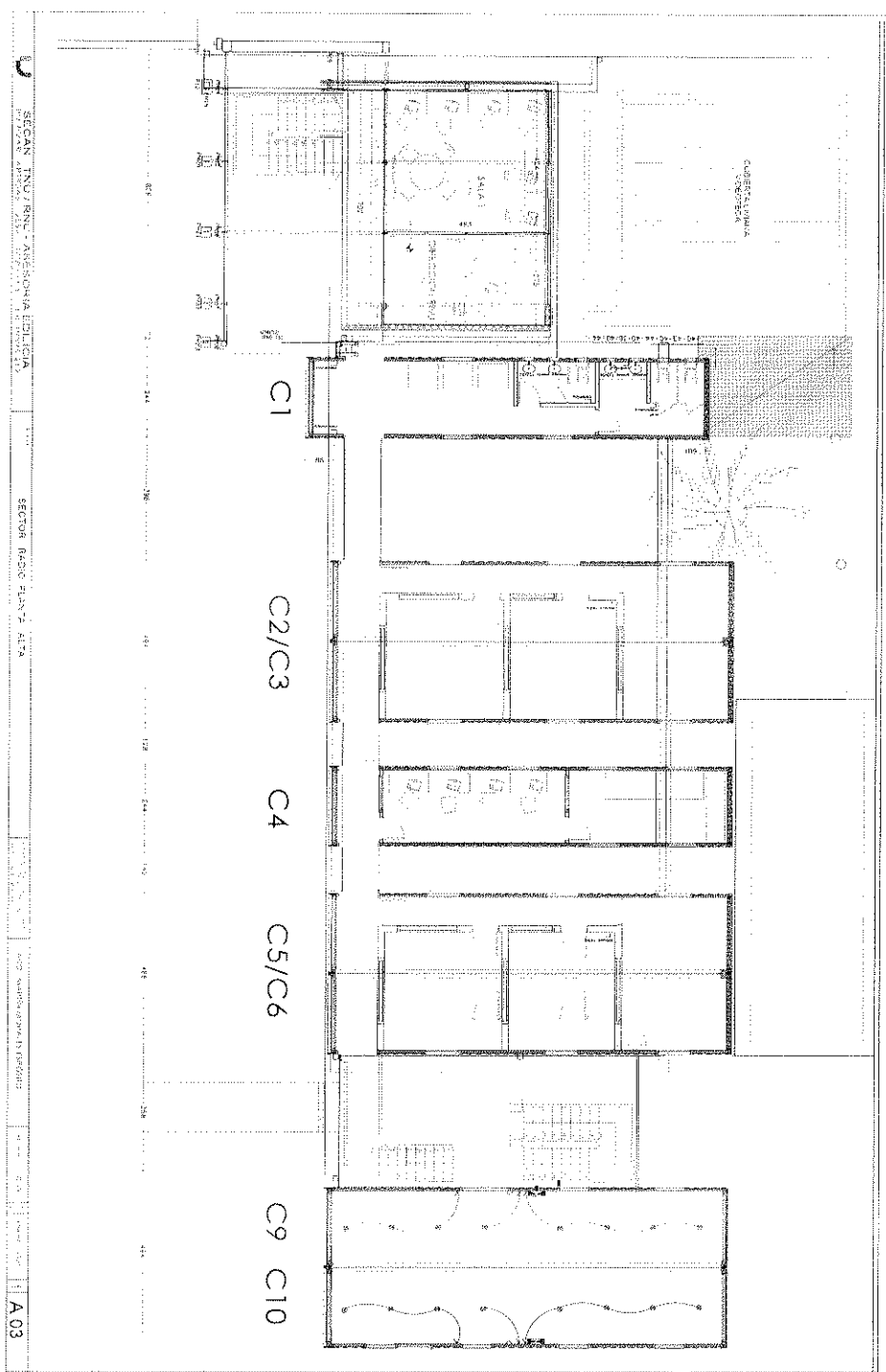
EL-2-3/5/6

REFERENCIAS

- 7 TABLERO
- 7 TONYA ELECTRICO (1 SHUCCO Y 1 2 EN LINEA)
- 7 TONYA AREE ACONDICIONADO (1 SHUCCO)
- 7 PUESTA DE LUZ CON LAMPARAS LED
- 7 PUNTO DE 18 CM DE 18V 220V DE LUZ 4.000°K
- 7 LLAVE
- 7 TIRA DE LEDS RGB CON CENEFA DE ALUMINIO

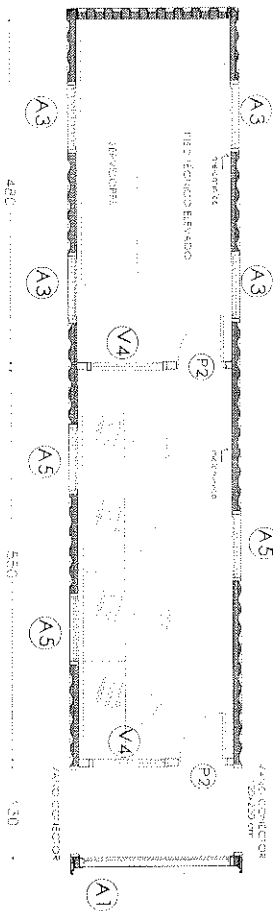


SECAN TNU / RNU - PLANTA ALTA - CONTENEDORES 1 a 6 sobre azotea existente / CONT 9y10

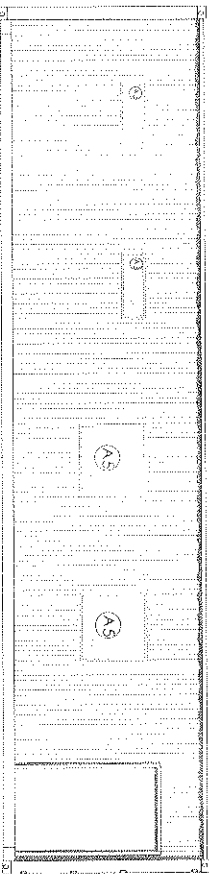


SECAN TNU/RNU - ARQUITECTURA EDUCATIVA  
 PAVILION ARQUITECTURA  
 SECTOR RADIO PLANTA ALTA  
 1:500  
 A 03

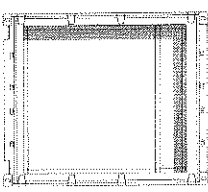
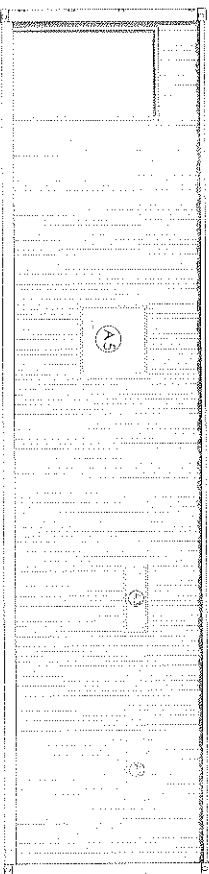
C4 - container 4 PLANTA 1/50



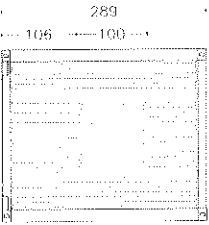
FACHADA NORTE 1/50



FACHADA SUR 1/50



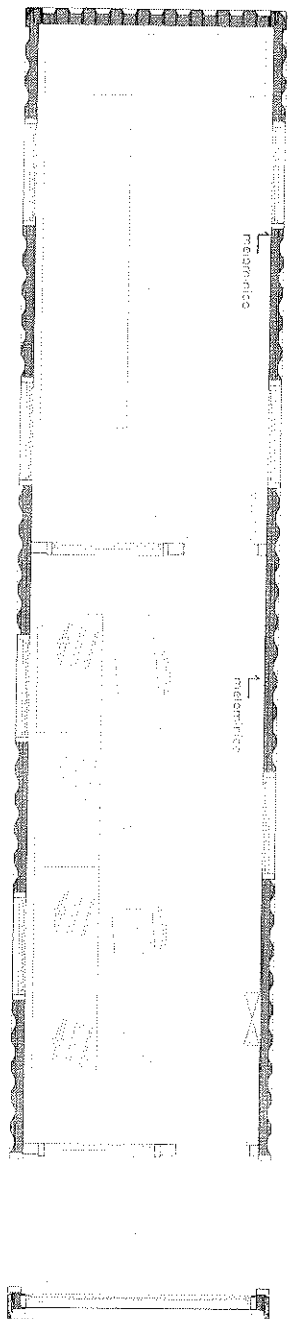
C4 - container 4  
FRENTE BULEVAR



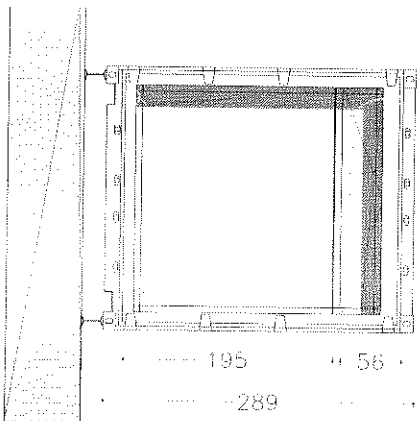
C4 - container 4  
FONDO

CONTAINER 4 - ELÉCTRICA

PLANTA 1/33



FACHADA 1/33



244

195

56

289

REFERENCIAS

TABLERO

- TOMA ELÉCTRICO (1 SHUCKO y 1 2 EN LINEA)
- TOMA AIRE ACONDICIONADO (1 SHUCKO)
- PUESTA DE LUZ CON LUMINARIA LED circular de 18 cms de 18w 220V de luz 4.000K
- LLAVE
- TIRA DE LEDS RGB CON CENEFÁ DE ALUMINIO