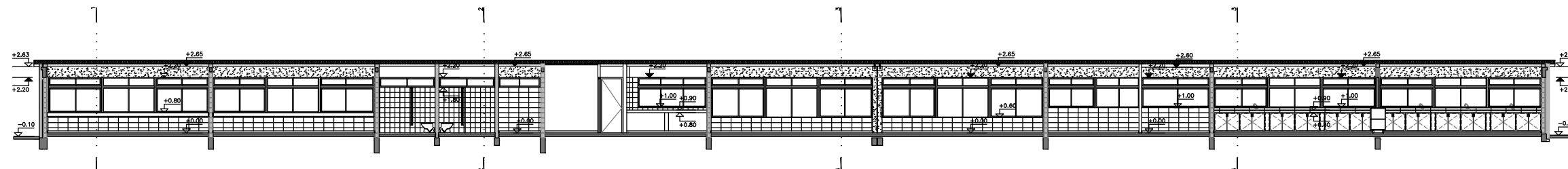
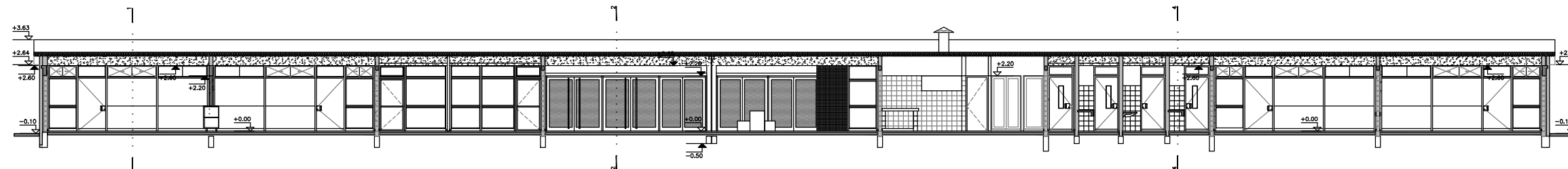
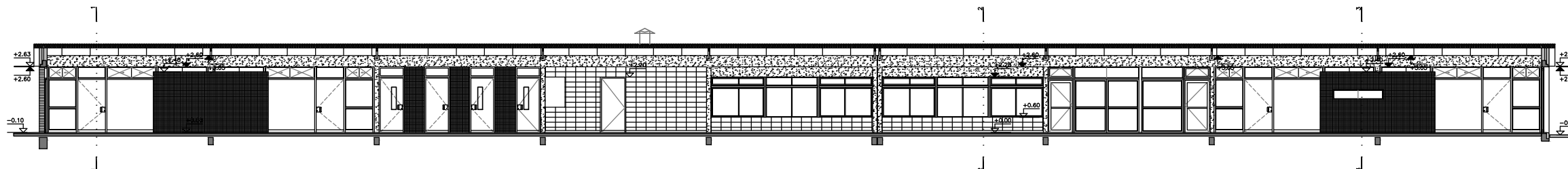
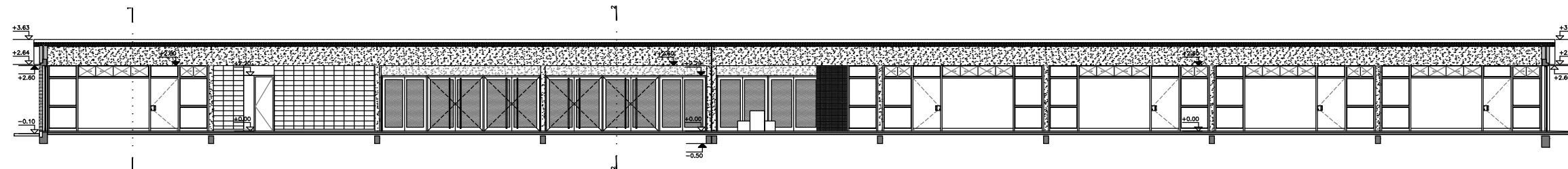


The figure contains two circuit diagrams. The left diagram shows a voltage divider circuit with a 100 ohm load resistor connected across the output terminals. The output voltage is labeled as 2.10V. The right diagram shows the same circuit but with the load resistor removed, resulting in a higher output voltage of 2.40V. Both diagrams show a 10V input source and a 100 ohm resistor in series with the divider.



H:\4 - CUARTO LLAMADO\NUEVA CARPETA\PROTIPO 7 AULAS ALZADOS.DWG