

PLANILLAS DE COORDENADAS

Table with 3 columns: Pto, X, Y. Contains coordinate data for points 1 through 100.

PLANILLAS DE COORDENADAS

Table with 3 columns: Pto, X, Y. Contains coordinate data for points 201 through 400.

Table with 3 columns: Pto, X, Y. Contains coordinate data for points 201 through 400.

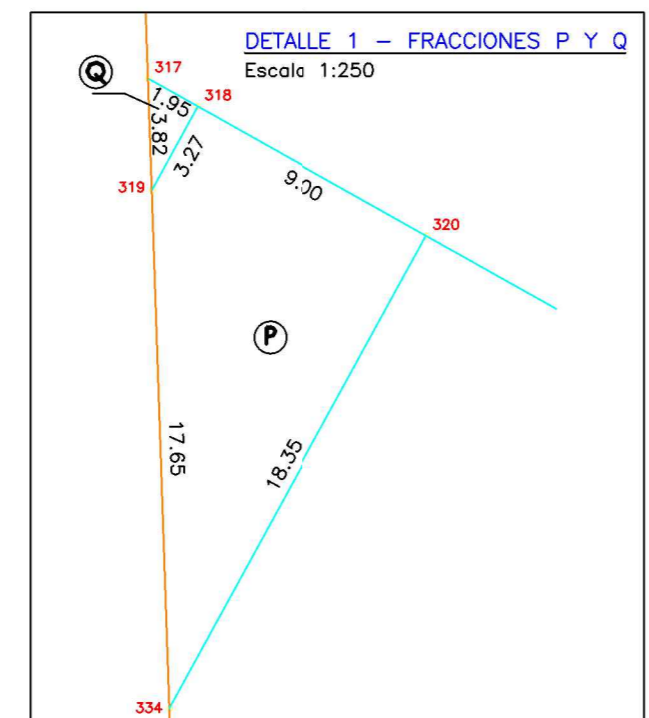
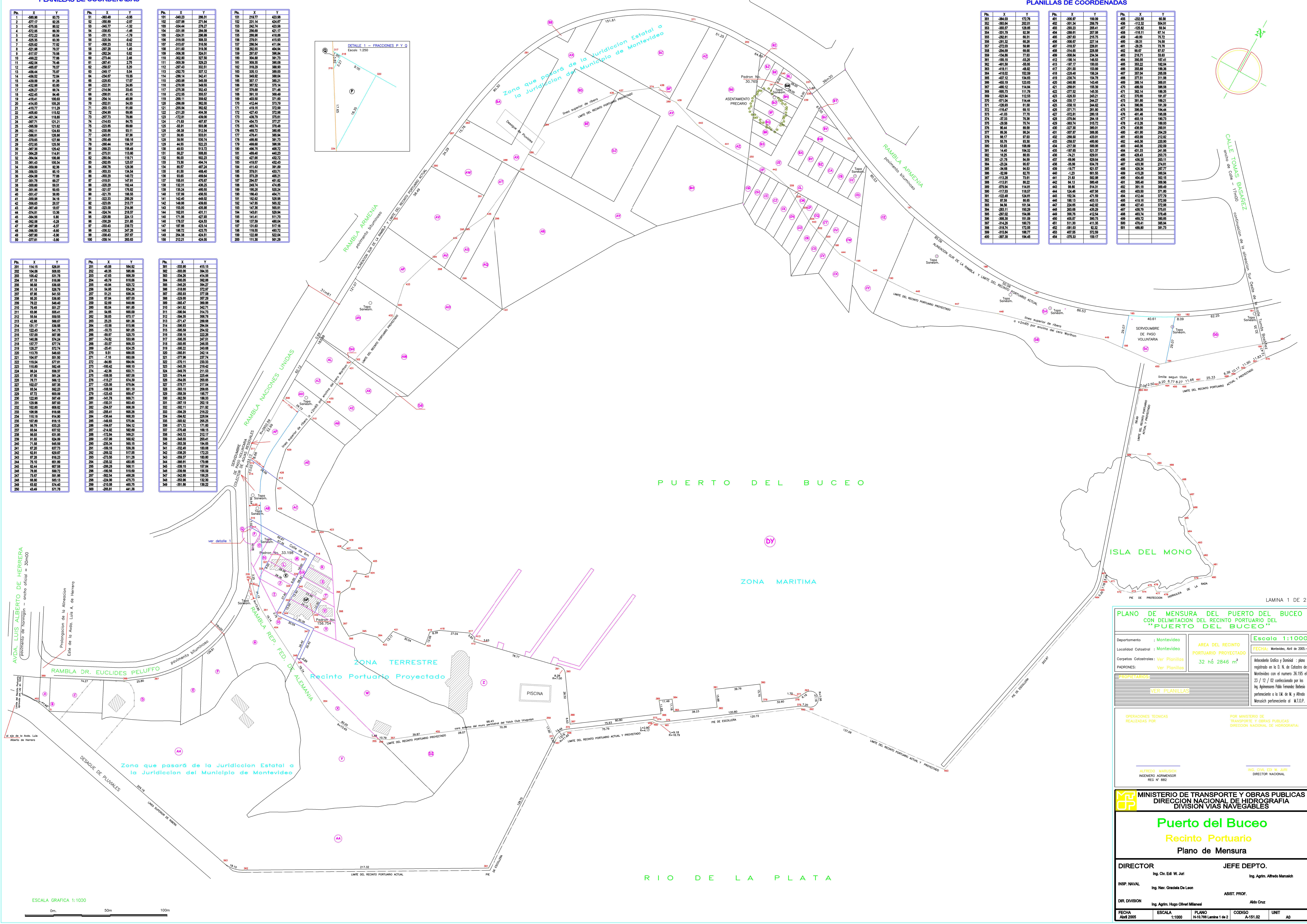


Table with 3 columns: Pto, X, Y. Contains coordinate data for points 401 through 600.

Table with 3 columns: Pto, X, Y. Contains coordinate data for points 601 through 800.

Table with 3 columns: Pto, X, Y. Contains coordinate data for points 801 through 1000.



PLANO DE MENSURA DEL PUERTO DEL BUCEO CON DELIMITACION DEL RECINTO PORTUARIO DEL "PUERTO DEL BUCEO". Includes metadata: Departamento: Montevideo, Localidad Catastral: Montevideo, Area del recinto portuario proyectado: 32 ha 2846 m², Escala: 1:1000, Fecha: Montevideo, Abril de 2005. Also lists 'PROPIETARIOS' and 'OPERACIONES TECNICAS REALIZADAS POR'.

Professional signatures and titles: ALFREDO TABORDA, INGENIERO AGRIMENSOR, REG. N° 882; and ING. CIVIL EDU M. ARI, DIRECTOR NACIONAL.

MINISTERIO DE TRANSPORTE Y OBRAS PUBLICAS, DIRECCION NACIONAL DE HIDROGRAFIA, DIVISION VIAS NAVEGABLES. Logo and name: Puerto del Buceo, Recinto Portuario, Plano de Mensura. Includes names of the Director and Jefe Depto., and technical details: INSP. NAVAL, DIR. DIVISION, FECHA, ESCALA, PLANO, CODIGO, UNIT.

