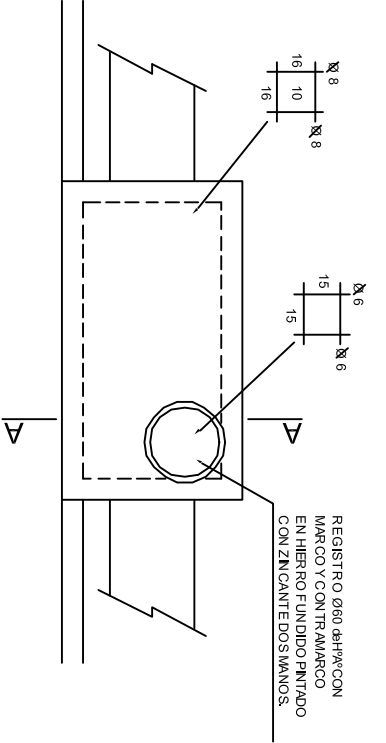


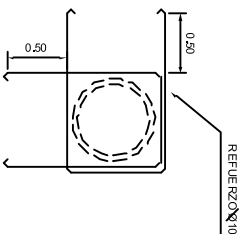
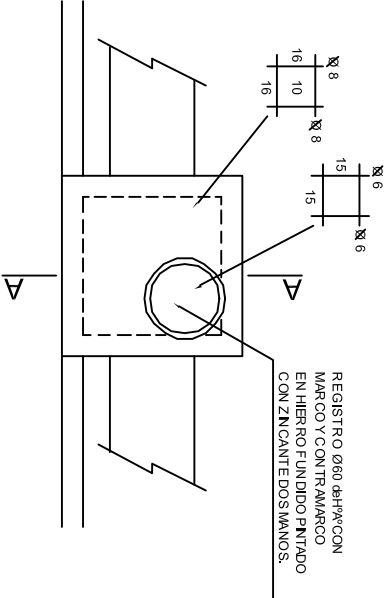
CAMARA 2 x 1 x 1

PLANTA esc.: 1/20



CAMARA 1 x 1 x 1

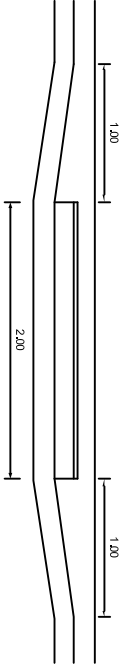
PLANTA esc.: 1/20



REFUERZO
EN REGISTRO

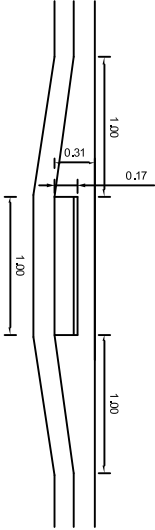
BOCAS DE TORMENTA

VISTA FRONTAL esc.: 1/20



BOCAS DE TORMENTA

VISTA FRONTAL esc.: 1/20



HIERRO: Resistencia a la fluencia: 5000 kgf/cm²
HORMIGON: Clase VII D.N.V. - M.T.O.P.
TOSCA CEMENTO: 100 kg Cemento Portland / m³
de Tosca Compactada.